



Chamber Elections Survey Results

Presented 6 February 2013

SUPPORT. PROMOTE. PROTECT.



SURVEY DATES:

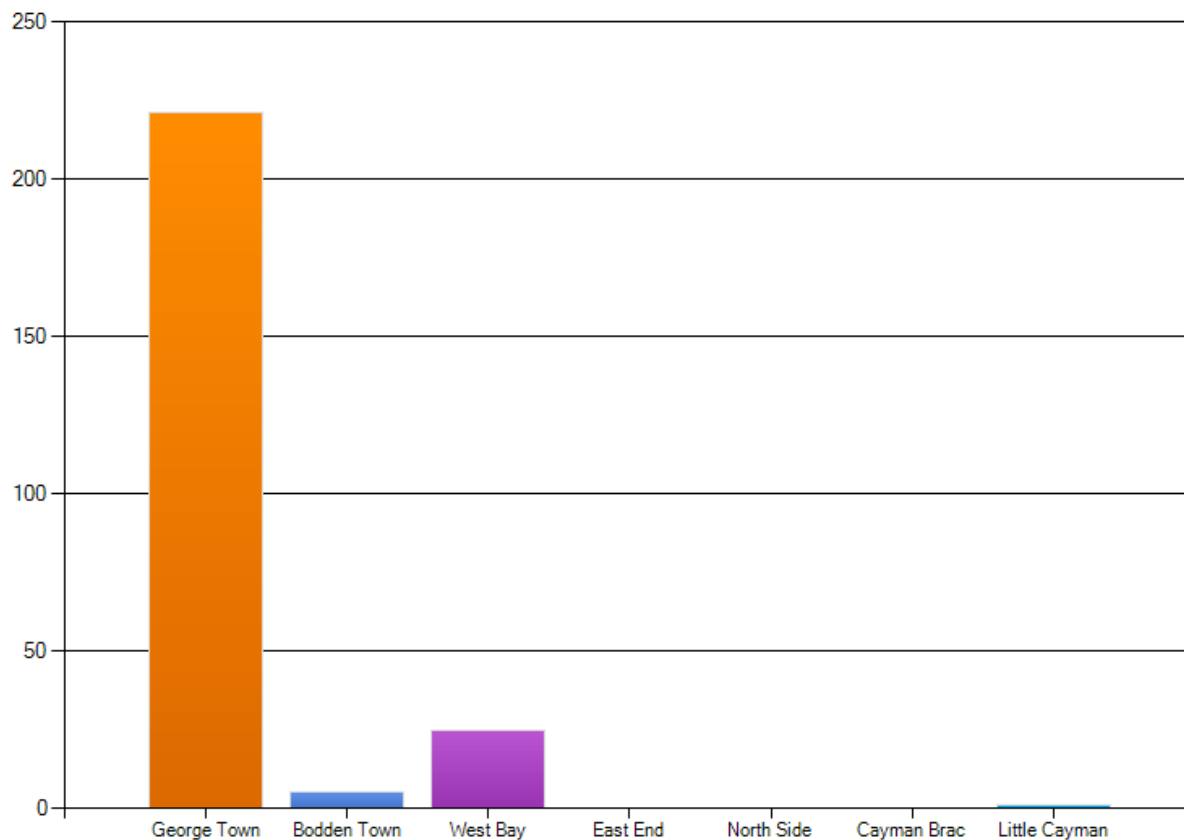
24 January – 5 February 2013

254 Responses Received

SUPPORT. PROMOTE. PROTECT.



My business or employer is located in:



SUPPORT. PROMOTE. PROTECT.

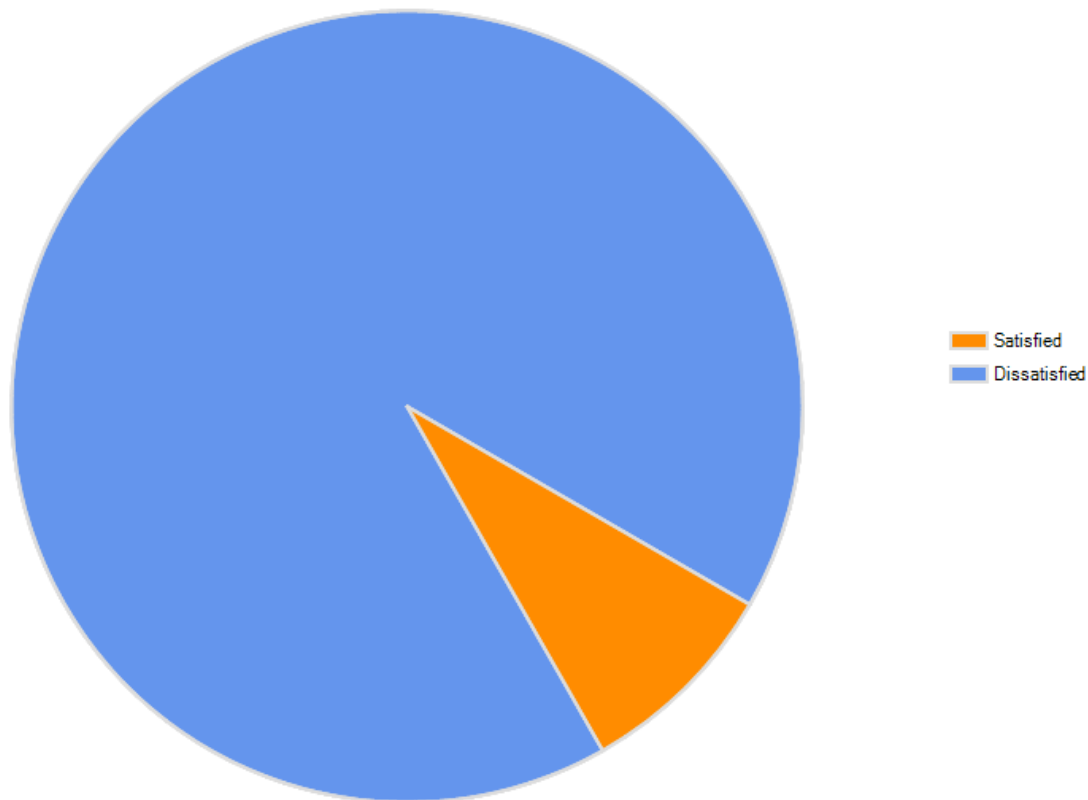


87.7 % of the
respondents businesses
were located in
George Town

SUPPORT. PROMOTE. PROTECT.



In general, are you satisfied or dissatisfied with the way things are going in the Cayman Islands at this time?



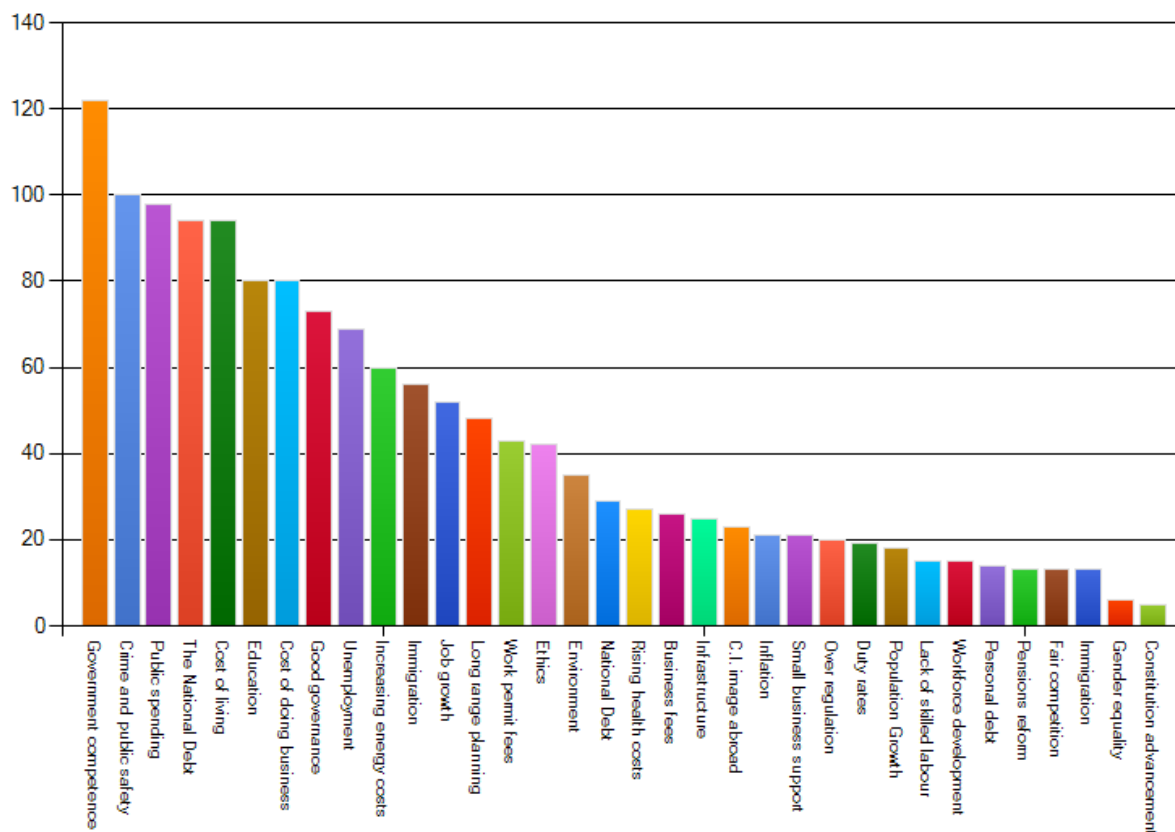
SUPPORT. PROMOTE. PROTECT.



91.6 % of the respondents were
NOT satisfied with the way
things are going in the Cayman
Islands at this time.

SUPPORT. PROMOTE. PROTECT.

What are the five most critical issues facing the Cayman Islands today?



SUPPORT. PROMOTE. PROTECT.



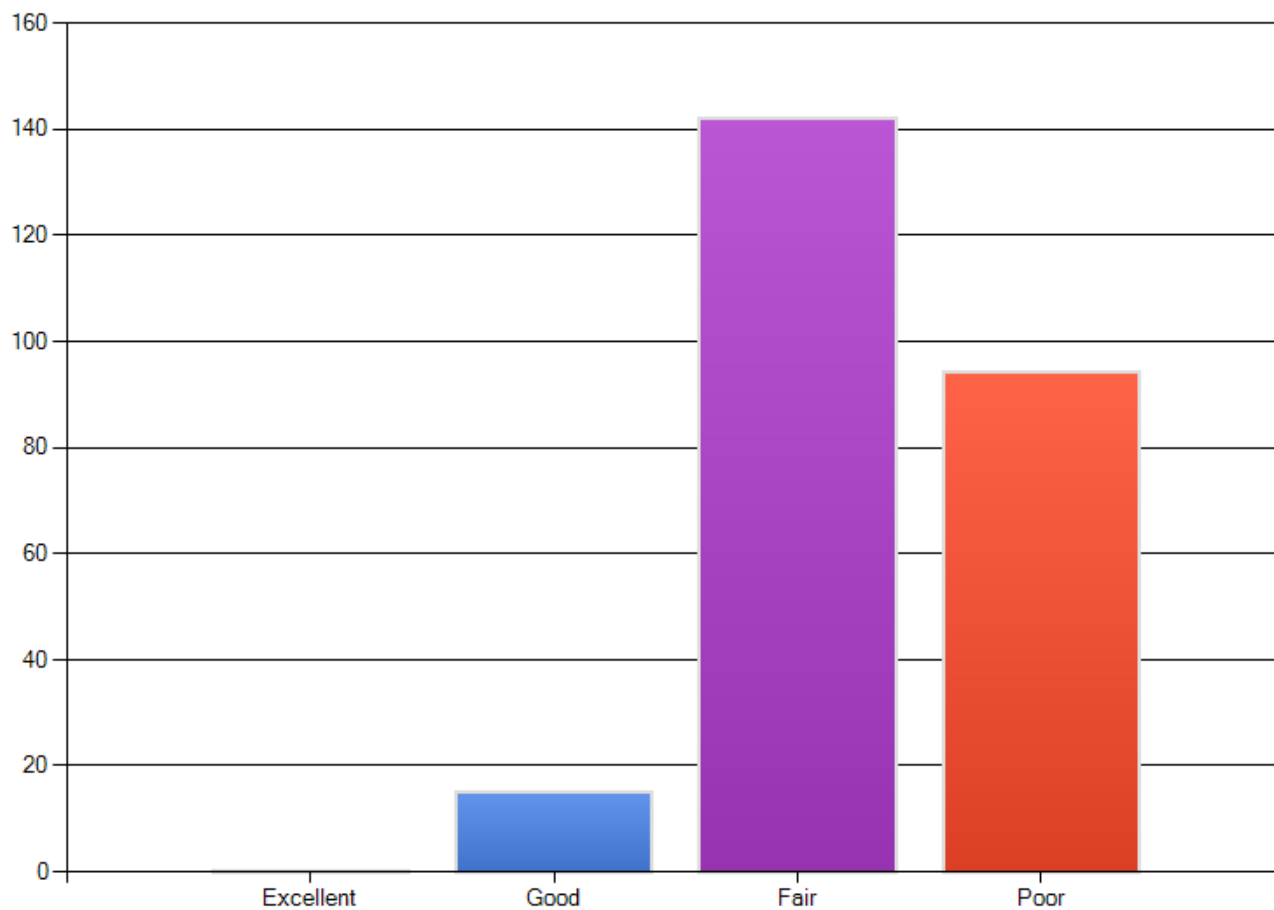
The 5 most critical issues facing the Cayman Islands today

1. Government Competence
2. Crime and Public Safety
3. Public Spending
4. Cost of living & The National Debt (tied)
5. Cost of Doing Business & Education (tied)

SUPPORT. PROMOTE. PROTECT.



How would you rate economic conditions today?



SUPPORT. PROMOTE. PROTECT.

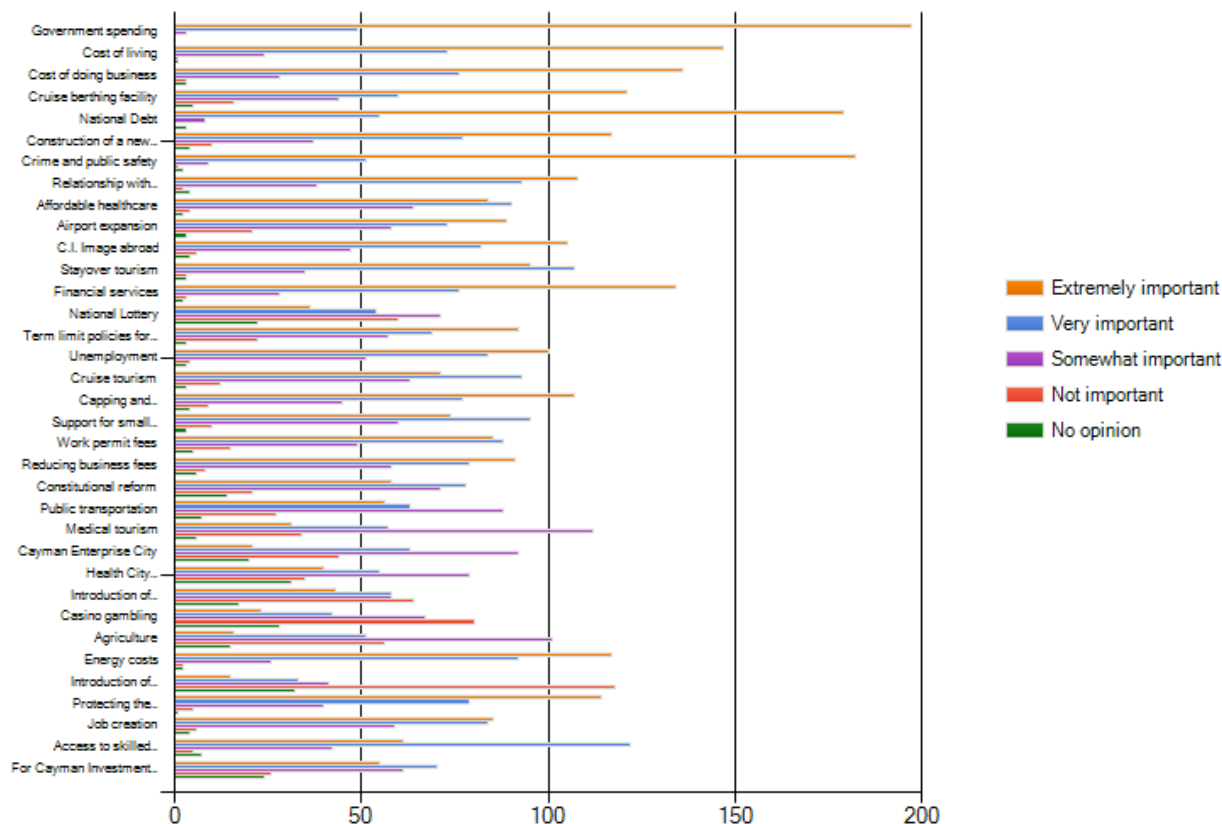


56.6 % of the respondents
felt the economic conditions
today are **fair**.

SUPPORT. PROMOTE. PROTECT.



The following is a list of the issues that will probably be discussed in this year's elections. Please confirm how important the candidate (s) positions are on each issue.



SUPPORT. PROMOTE. PROTECT.



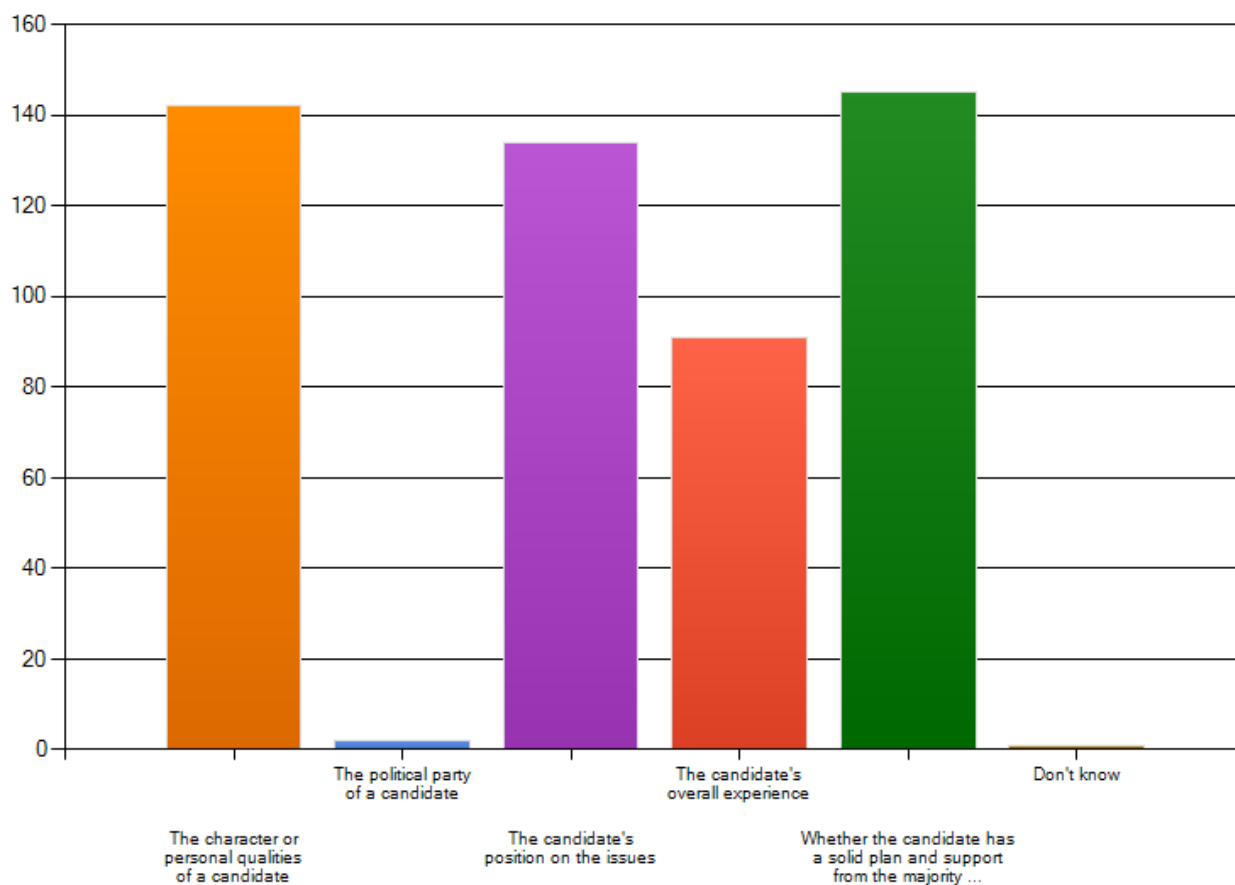
Topping the list of **extremely important** issues to be discussed are:

1. Government Spending
2. National Debt
3. Crime & Public Safety
4. Cost of Living
5. Cost of Doing Business

SUPPORT. PROMOTE. PROTECT.



Which of the following matters most when selecting a candidate.

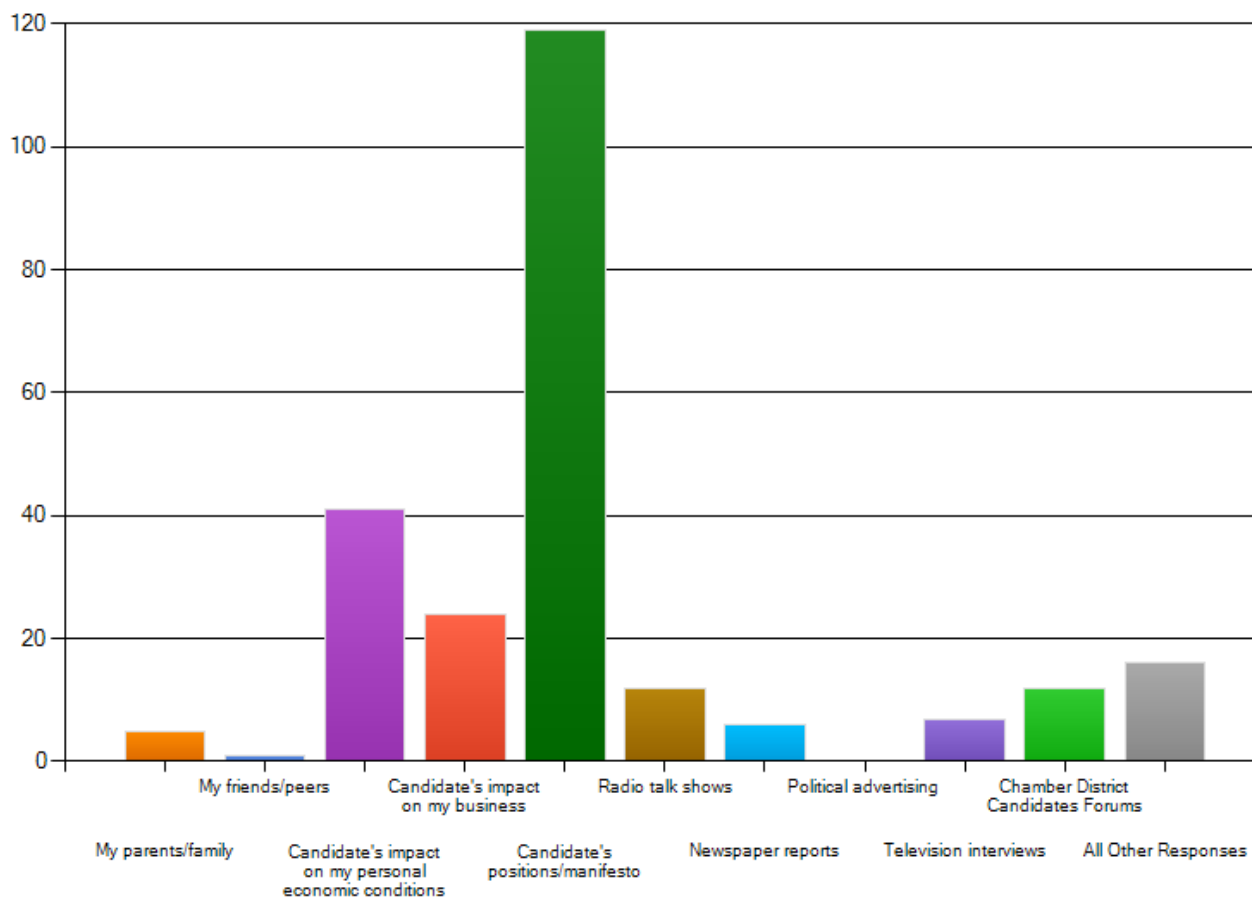


SUPPORT. PROMOTE. PROTECT.

What matters **MOST** when selecting a candidate?

1. Whether the candidate has a solid plan and support from the majority of the community to address the Islands' problems
2. The character or personal qualities of a candidate

Which of these do you say **MOST** influences your political opinion?



SUPPORT. PROMOTE. PROTECT.



49 % of the respondents feel
the **Candidate's**
positions/manifesto
most influences their political
opinion.

SUPPORT. PROMOTE. PROTECT.



*Thank You for
your attention*

SUPPORT. PROMOTE. PROTECT.